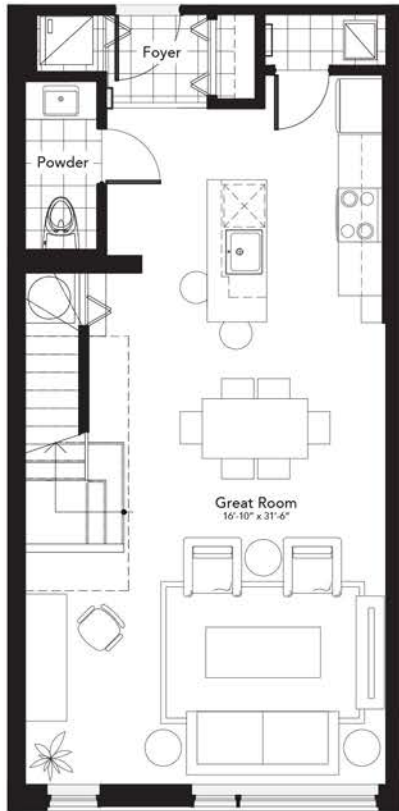




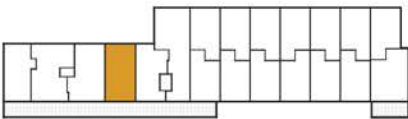
# VESEY

2 BDRM + DEN  
UNIT F1 | 1267 SQ.FT.

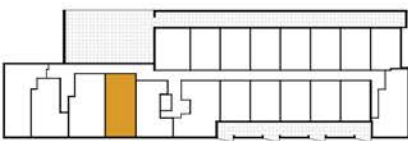
YOUR LOFT IS HERE



THIRD FLOOR



SECOND FLOOR



Prices and specifications are subject to change without notice. Bulkheads and dropped ceilings will be added as required for mechanical, electrical and structural elements. Actual usable floor space may vary from the state floor area. E. & O.E.

More info at [claridgetribecalofts.com](http://claridgetribecalofts.com)

